



Nottinghamshire Wildlife Trust Trading Ltd

Applicant Recruitment pack



Achieving a people powered nature recovery

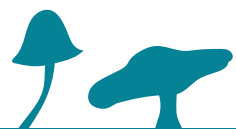
About us.....

Established in 2014, Nottinghamshire Wildlife Trust Trading Limited is a wholly owned subsidiary of Nottinghamshire Wildlife Trust (NWT).

Nottinghamshire Wildlife Trust is the leading wildlife conservation charity working to protect and enhance the wildlife and habitats of Nottinghamshire.

All of our profits are gift aided to the Trust to support their work on nature conservation across Nottinghamshire.

The Trading Company employ over 40 people in their cafes and retail shops in both flagship reserves, Attenborough Nature Reserve and Idle Valley Nature Reserve, as well as the Engagement Team who focus on local community and business engagement through events and hands on learning and action for nature.



Nottinghamshire
Wildlife Trust

Achieving a people powered nature recovery



We believe.....

That the natural world is valuable in its own right and is under threat

That people are part of the natural world and we depend upon it for our existence

That everyone should have the opportunity to live in a healthy, wildlife-rich natural world

That it is vital that we work with others because we all have the power to make a positive impact on the nature and climate emergencies



Our Vision.....

That Nottinghamshire's people and wildlife are thriving together.

The Wildlife Trusts are calling for at least 30% of our land and sea to be connected and protected for nature's recovery by 2030. 30% is the bare minimum that nature needs to start recovering but we are far short of this and need your help to turn things around.

To help us achieve these ambitious goals across the UK we want to inspire at least 1 in 4 people here in Nottinghamshire to take action for wildlife at home, at work, at school or in their neighbourhood.

We look to our team to build relationships and provide first class customer service to our visitors and clients, enabling them to return time after time.

We support every one of the team to bring new ideas of how to gain profit that we can gift to Nottinghamshire Wildlife Trust to help secure the future of Nottinghamshire's wildlife. We encourage anyone that has a passion for nature and a commitment to customer service to join us.



Nottinghamshire
Wildlife Trust

Achieving a people powered nature recovery

Our Goals.....

Wilder Nottinghamshire 2030

**Wilder Places =
nature in recovery**

More naturally functioning landscapes where wildlife is thriving and more abundant, lost species have returned, and communities are protected by and benefiting from nature. Our estate and other sites of wildlife importance are protected

**Wilder Lives =
people taking action**

People value, and feel connected to nature, are collaborating to take action for nature and are leading action for nature in their own communities

**Thriving Together =
securing our future**

Staff and supporters are valued and connected, we are the 'go to' nature organisation in Nottinghamshire that people want to support; our income is well raised and spent wisely, and governance and leadership enables our success



Wilder Places: Nature in Recovery



Think Beyond Boundaries

Look beyond our land to think on nature's scale.



Lead by Doing

Demonstrate how restoring nature delivers multiple benefits.



Influence Land Management

Offer targeted advice to landowners and land managers.



Restore Species

Bring back lost species



3

/ 19



Nottinghamshire
Wildlife Trust

Achieving a people powered nature recovery

Wilder Lives: People Taking Action

Connect

Help people reconnect with nature for wellbeing.

Advocate

Champion nature with decision makers.

Inspire

Share the wonders of the natural world.

Empower

Support communities to take action.



Nottinghamshire
Wildlife Trust

Achieving a people powered nature recovery

Thriving Together = Securing our Future

This underpinning goal is about making Nottinghamshire Wildlife Trust secure and sustainable for a long time to come, so we can continue our vital work for wildlife in our county.

Value

We will prioritise the wellbeing of our people – volunteers and staff – and will live up to our core values across our organisation

Advocacy

Through our campaigns we will communicate a positive picture and narrative of the huge and varied opportunities that could be created if we achieve a wilder Nottinghamshire.

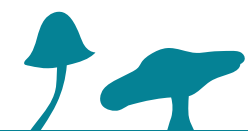


Sustainable

We'll run our organisation in a sustainable way, by being confident that our resources of time, talent and money are invested in achieving the biggest impact possible for nature in Nottinghamshire.

Volunteers

We'll provide even more, and more diverse, opportunities for people to have a great experience of volunteering with us








Nottinghamshire
Wildlife Trust



Achieving a people powered nature recovery

Our Values.....

Ambitious	Together	Innovative	Inclusive	Supportive
				
We're ambitious for nature and for a Wilder Nottinghamshire, now and in the future. We're not afraid to speak up for what we believe in, and support others who share our beliefs	We work together , valuing teamwork and collaboration to achieve the best outcomes for wildlife and people across Nottinghamshire	We're innovative , using the knowledge and expertise of our colleagues, volunteers, supporters and partners to bring about a step change for nature's recovery	We're inclusive , challenging ourselves and others, to become even more relevant amongst our local communities and networks	We're supportive , valuing each other and everyone we work with; recognising and celebrating diverse experience and expertise



Our offices.....



TORS
The Old Ragged School
1 Brook Street
Nottingham
NG1 1EA
Tel: 0115 958 8242
E-mail: info@nottswt.co.uk

Opening hours: Monday-Thursday 9am-5pm



Attenborough Nature Centre
Barton Lane, Attenborough
Nottingham
NG9 6DY
Tel: 0115 972 1777
E-mail: attenborough@nottswt.co.uk

Opening hours: (Summer)
Monday to Friday: 9am to 5pm, Café closes at 4.30pm. Weekend: 9am to 6pm, Café closes at 5.30pm.
(Winter) Every day: 9am to 4pm, Café closes at 4pm.



Idle Valley Rural Learning
Centre
North Road (A638)
Retford, Nottinghamshire
DN22 8RQ
Tel: 01777 858 245

Opening hours: (Summer)
Monday to Friday: 10am to 5pm, Café closes at 4.30pm. Weekend: 9am to 6pm, Café closes at 5.00pm.
(Winter) Every day: 10am to 3pm, Café closes at 3:30pm.



Nottinghamshire
Wildlife Trust

Achieving a people powered nature recovery



The Old Ragged School (TORS) Car Parking



Nottinghamshire
Wildlife Trust

Achieving a people powered nature recovery



Employee Benefits

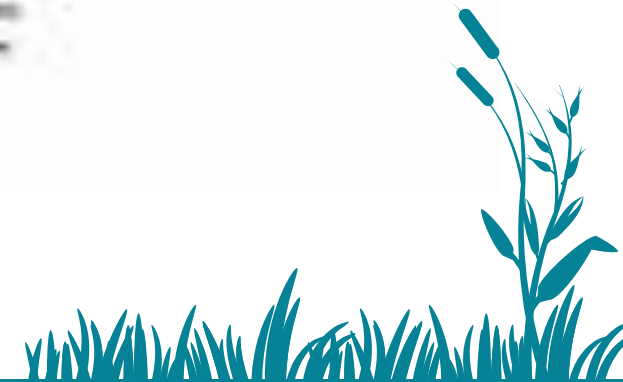
- Flexible working options, including home-working, and a healthy work-life balance encouraged
- Generous annual leave plus public holidays
- 8% employer pension contribution
- Health payment plan
- Payment of professional membership fees
- A close-knit, friendly and supportive team, with a relaxed office atmosphere
- Family friendly organisation



Learning & Development.....

We will fully support your training and development by:

- Supporting you in identifying training and development needs on an ongoing basis
- Giving you the time and resources to undertake the training /development
- Assisting you in applying the development in the workplace
- Offering training and development on a fair basis, assessing organisational and individual needs in relation to training and development.



Wellbeing.....



We provide the following to support employees in maintaining good health and wellbeing:

- Open communication and regular meetings including regular one to one catch ups and formal supervision sessions with their line manager
- Managers have an 'open door' policy whereby they are available for employees throughout the organisation to contact through the day.
- Special leave arrangements in line with our policies i.e. compassionate leave
- Opportunities for flexible working.
- An organisational grievance policy.
- Safeguarding policies
- A safe environment for employees to share matters of concern.
- An Employee Assistance Programme available to all employees

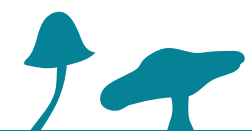
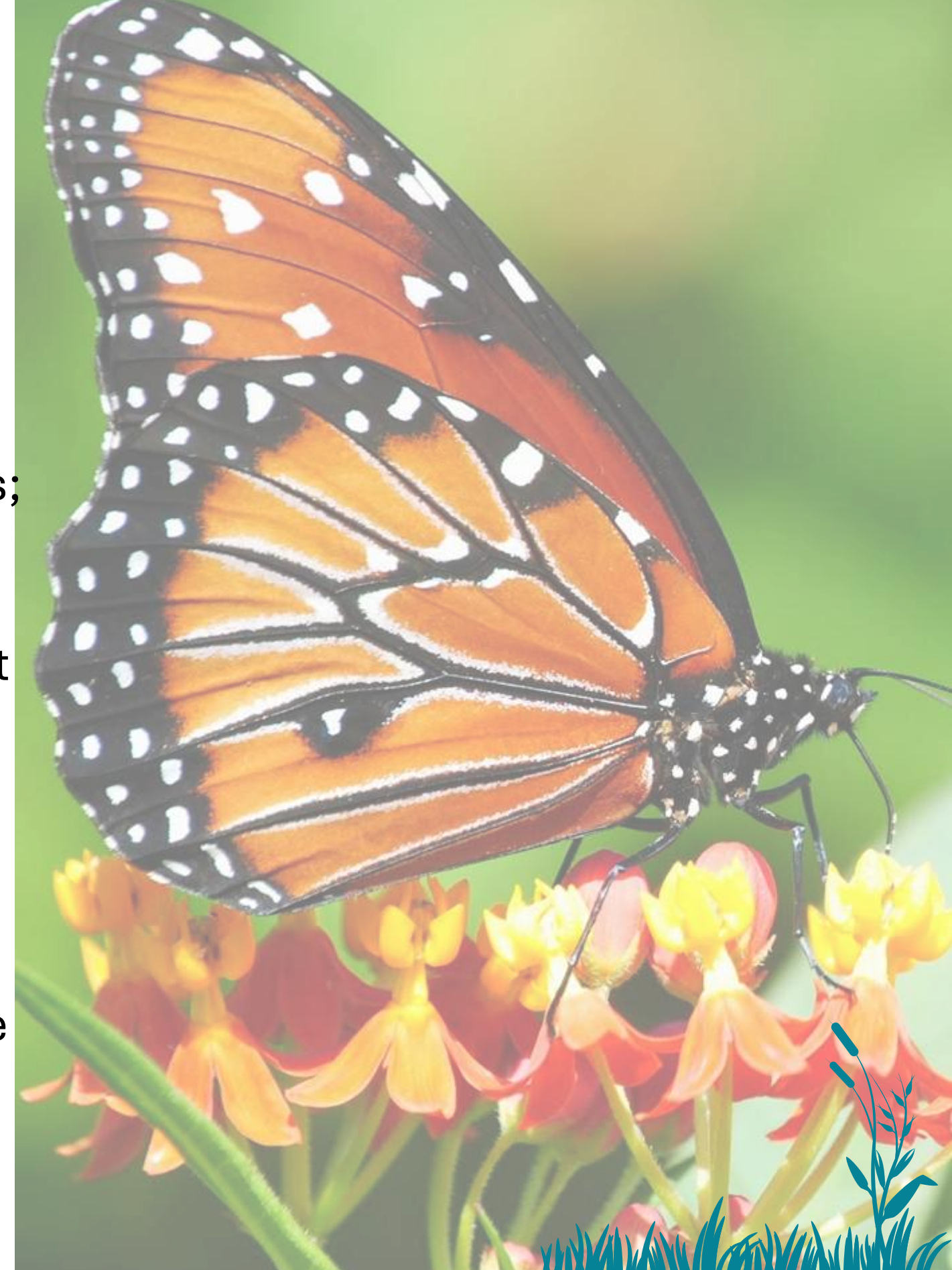


Making your application.....

Adjustments - If you require any adjustments to make our recruitment process more accessible, please let us know by contacting the HR team at HR@nottswt.co.uk

Employment checks - We are committed to safeguarding our employees; safeguarding and promoting the welfare of children and adults at risk; and mitigating the risk to our business of financial and/or data fraud. Applicants must be willing to undergo pre-employment checks with past employers; Disclosure and Barring Service checks at the eligible level; right to work checks and driving licence checks (where applicable)..

Please do not use artificial intelligence tools to assist you to complete the application form. We may not accept applications that have been completed utilising AI tools. If you would usually use tools such as these to assist you in filling in a form, please contact HR@nottswt.co.uk to discuss this further and understand other options.



Nottinghamshire
Wildlife Trust

Achieving a people powered nature recovery